

PORTFOLIO

Syed Zakwan

Experience

TASKO INTERIORS - INTERIOR DESIGNER & B.D ASSOCIATE

2019-22

Had initially joined as a Interior designer and was responsible for creating working drawings and visualization renders, was latter promoted as business development associate. My responsibilities includes interacting with clients , creating concept by understanding their brief, presenting a design concept. Post which creating mood board and material board followed by working drawings and renders. Was also responsible to supervise site executives for seamless execution of the project. Most of our projects are residential interiors and had successfully completed 15 projects during this tenure. As a business development associate was involved in promoting business and client acquisition though design experience.

CREAMY CULTURE - DESIGN CONSULTANT

2019

CREAMY CULTURE is a Jaipur based bakery ,had designed and executed their first retail outlet, the flagship store in Secunderabad. Post which was hired to create a franchise based model to replicate the store design across its branches in India. Had created a template based manual easy for any franchisee to understand the furniture ,kitchen, branding design and get the store completed with minimal work force in a short time frame.

FREELANCING

2017-19

Initially I started working with my cousin who is an interior designer. Taking care of the sites, execution gave me in depth knowledge of materials, fabrication and wood work. To improvise my design understanding ,courses on Udemy were beneficial in learning space planning, color theory and lighting. Latter joined an institute to learn drafting on AutoCAD and 3d designing, rendering in Sketch up and 3DS Max. With this skillset I started taking projects on my own. Till date I have successfully designed and executed 4 retail and restaurant design projects

SKILLS

SKETCHUP
AUTOCAD
V-RAY
MS OFFICE SUITE

SKETCHING
PHYSICAL MODELING
PUBLIC SPEAKING





A Jaipur based premium Bakery known for its exquisite pastries.

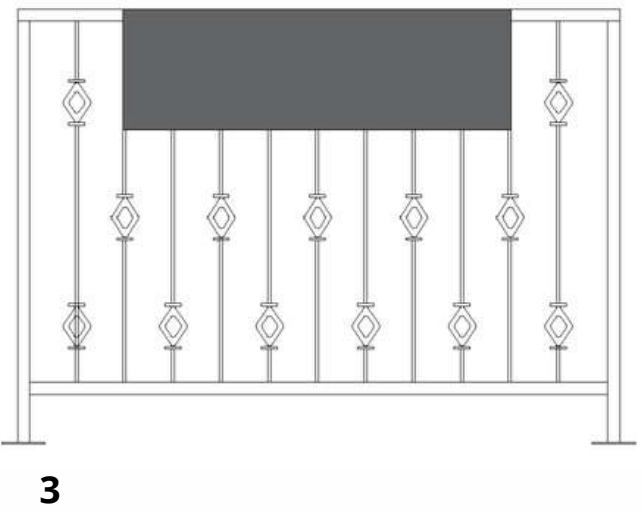
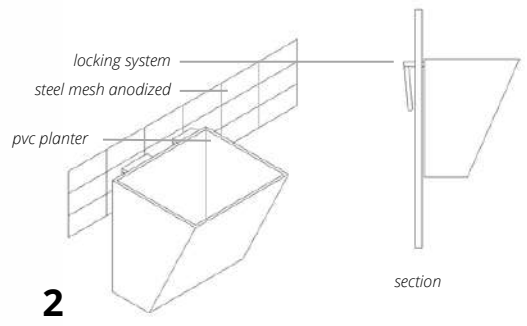
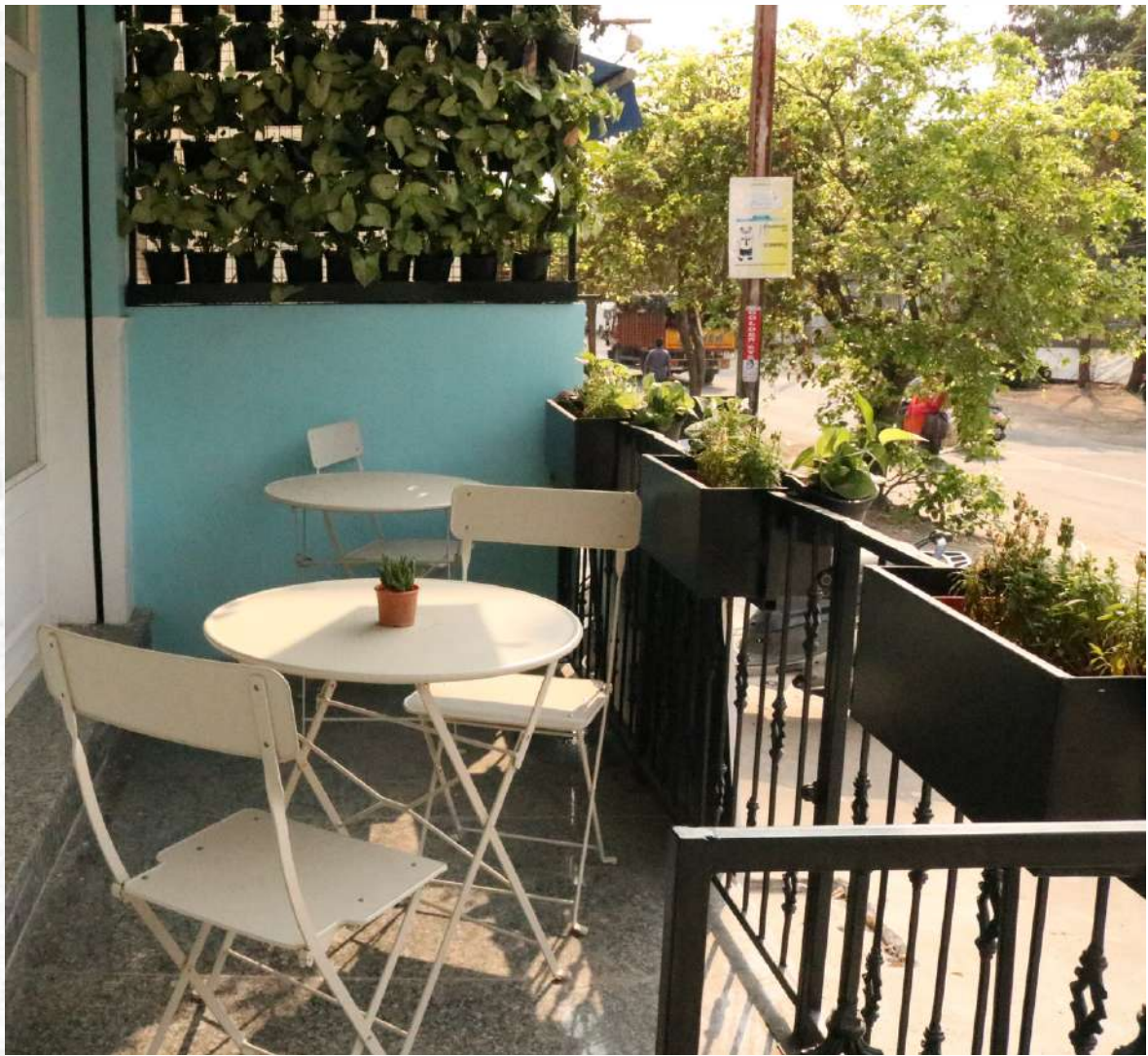
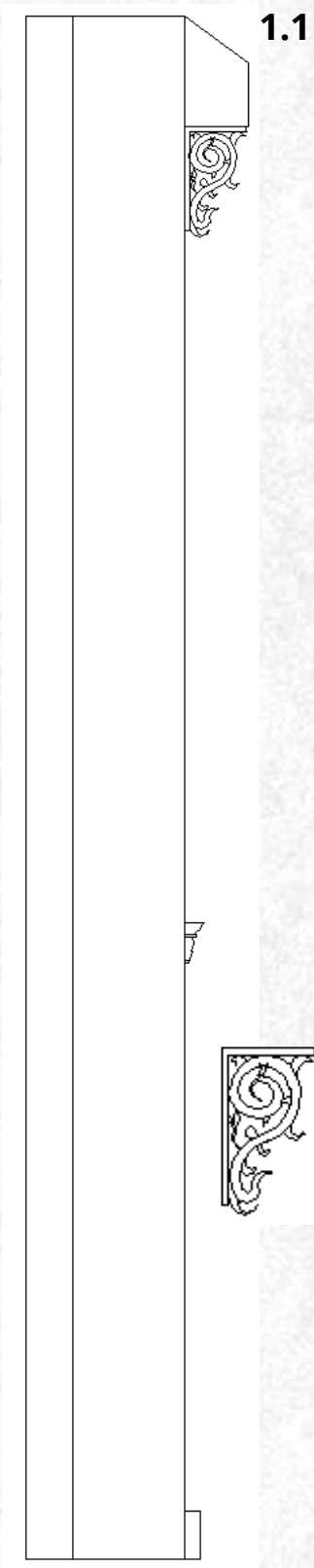
Planned to start their Flagship store in Hyderabad ,with a new look and would replicate the design for their upcoming stores across India.

The client wanted to have delicate interiors with pastel color scheme .

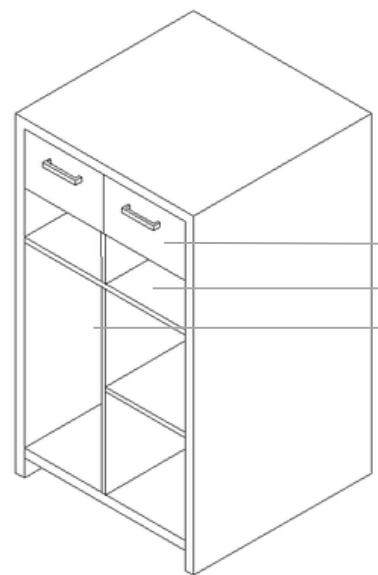
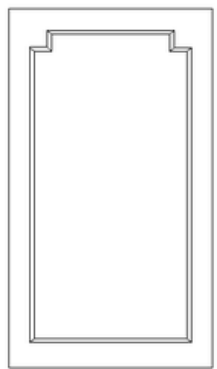
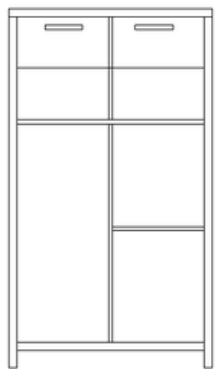
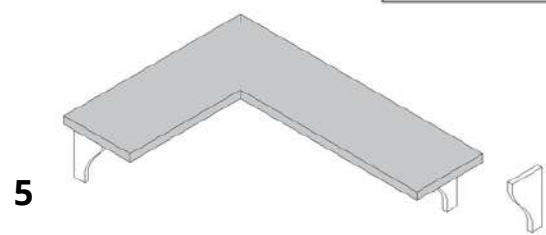
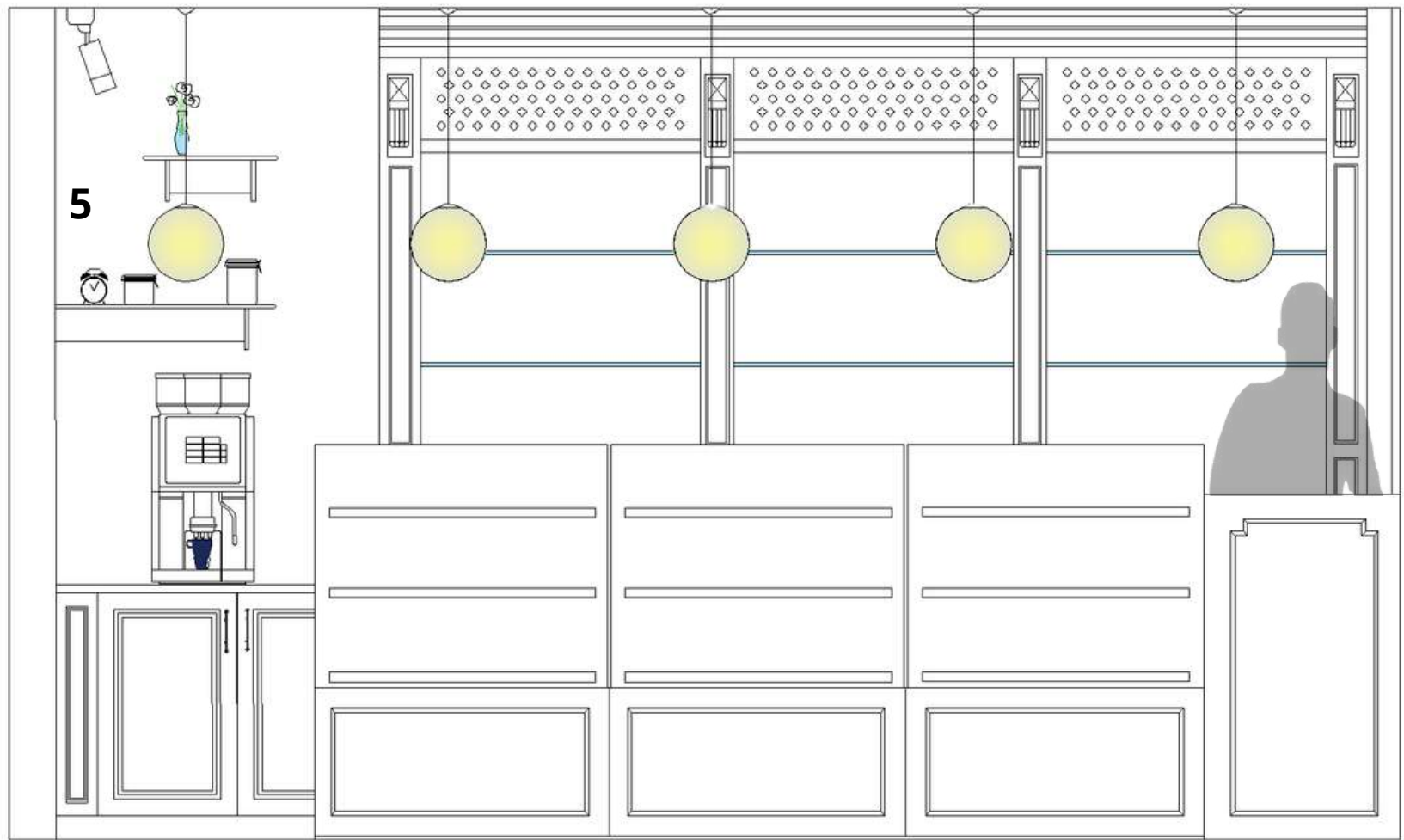
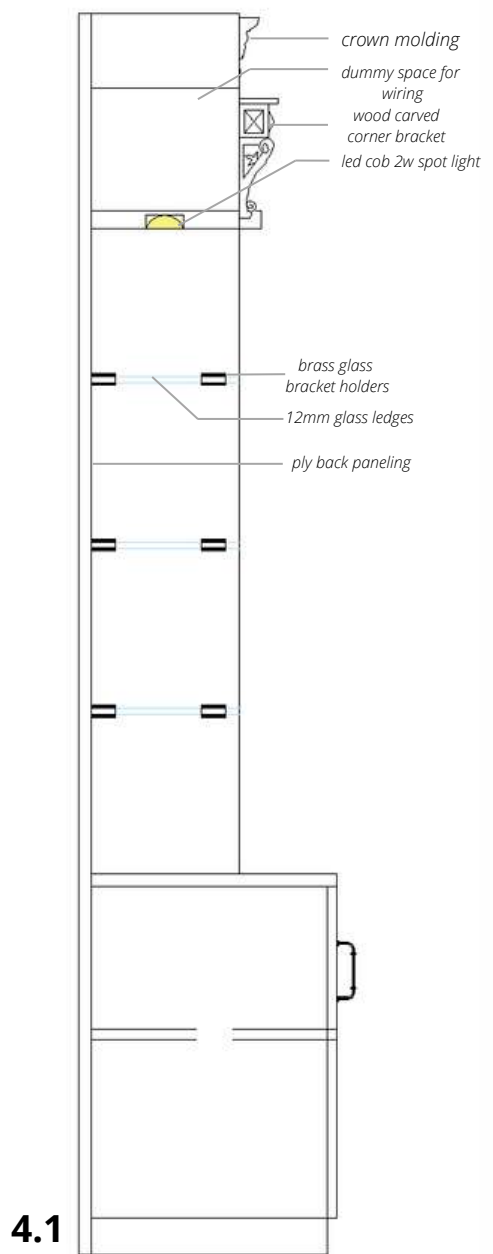
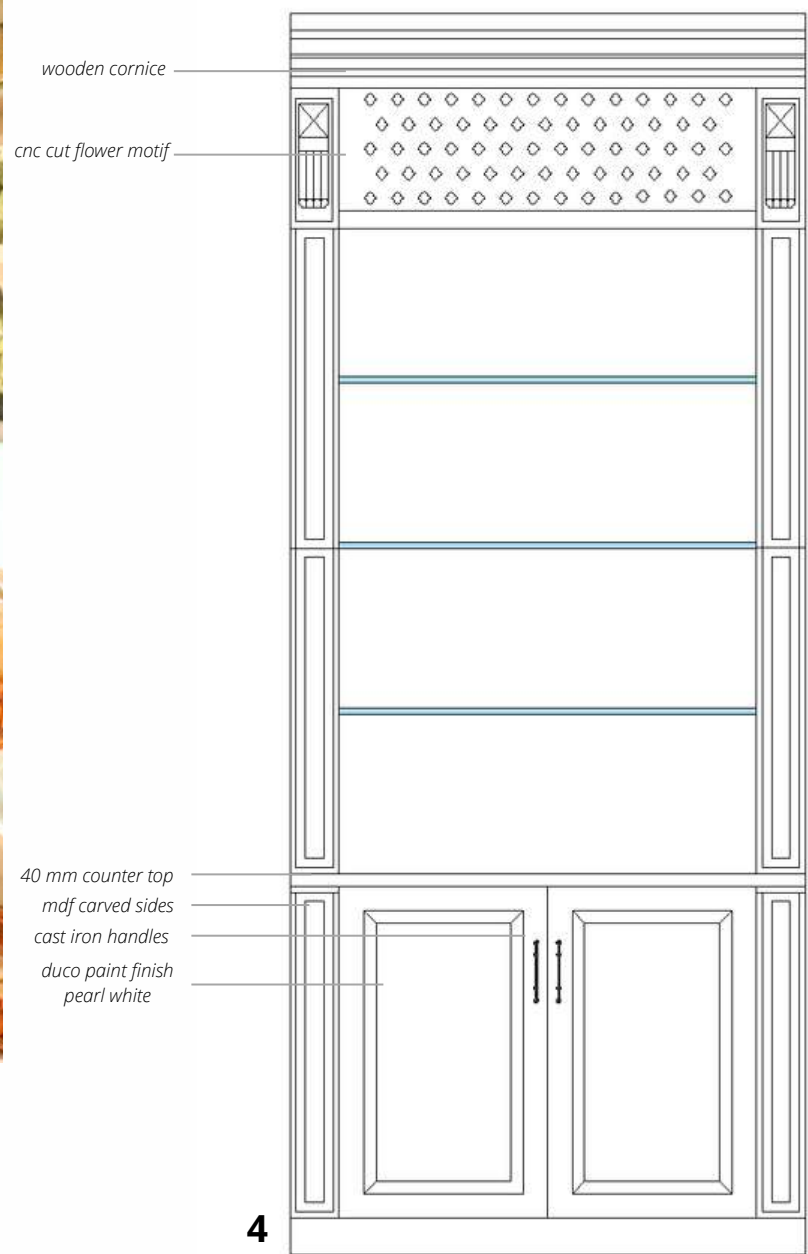
Most of the display units including the exterior façade and furniture were made in wood with cnc cut motifs and filigree detailing. Painted in pearl white to give a sophisticated look to the entire store.

Loose furniture, lighting and décor was outsourced from IKEA for ease of purchasing across pan India and its availability.

Known for their Scandinavian design and would also match well with rest of the theme.



1. ELEVATION FACADE 1.1 SECTION
2. VERTICAL GARDEN PLANTERS 3. FENCE WITH PLANTERS

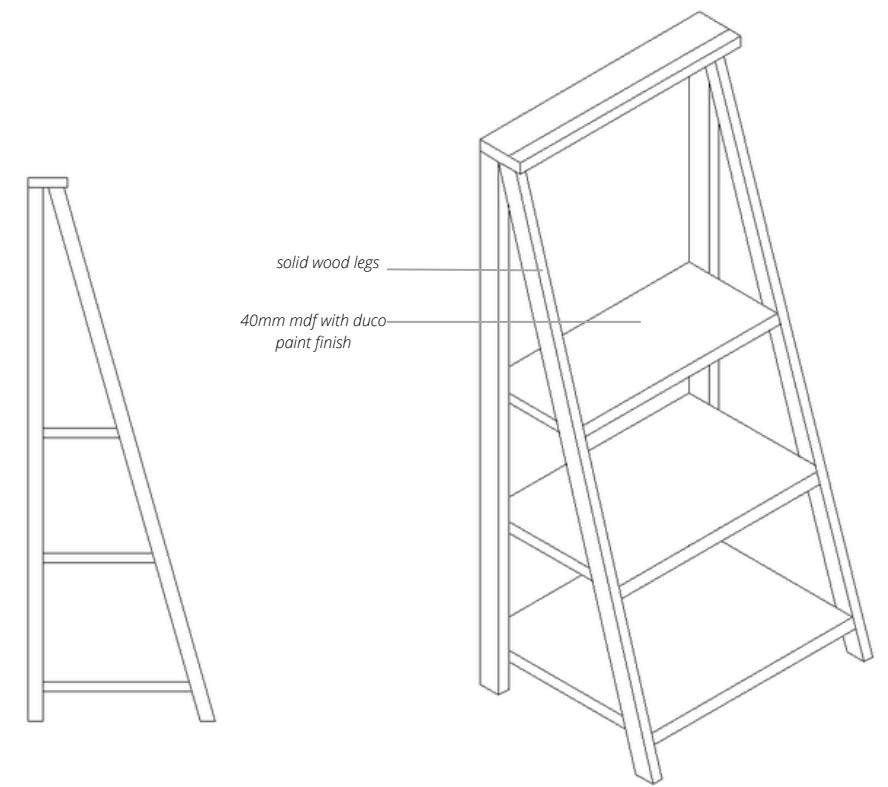


drawers with lock

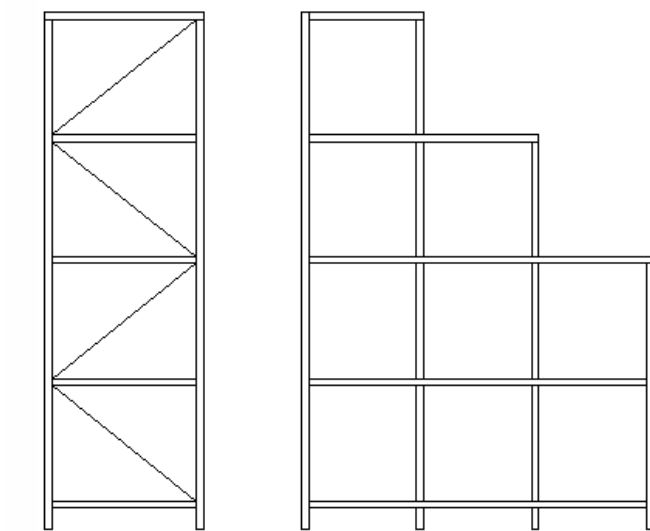
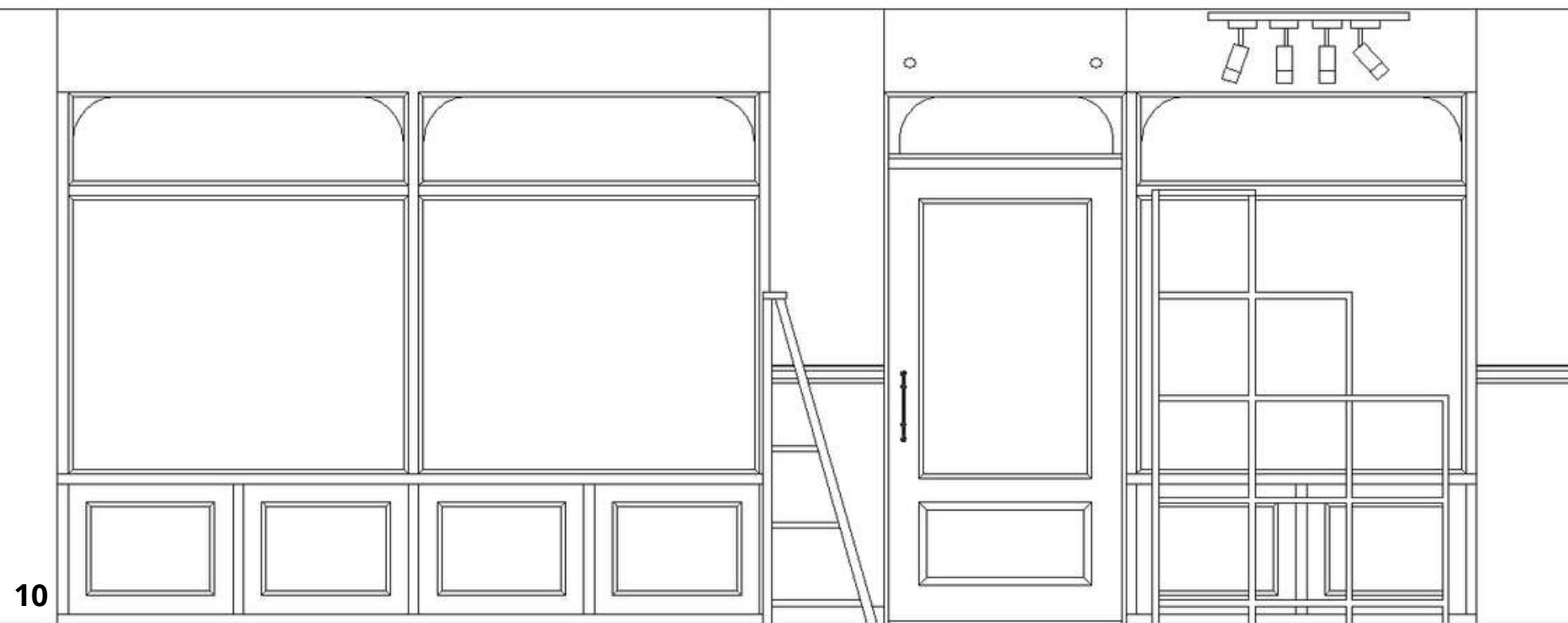
open shelves

open for c.p.u

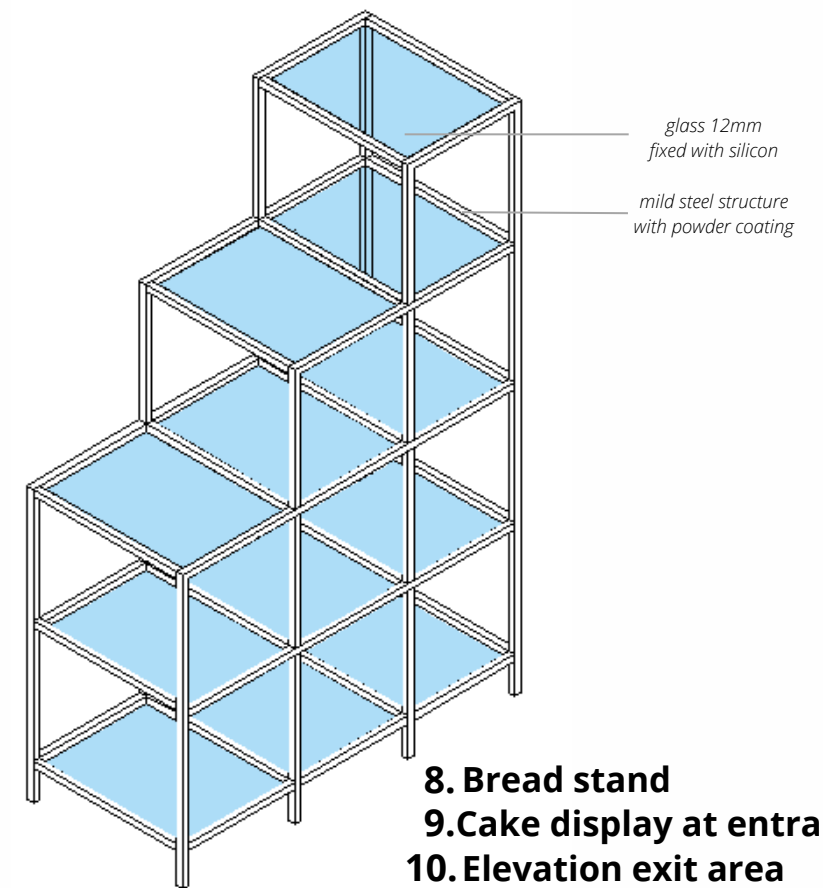
4.Main product display 4.1Section
5.Loose shelving 5.1 Assembly plan
6.Cash counter 7.Elevation display area



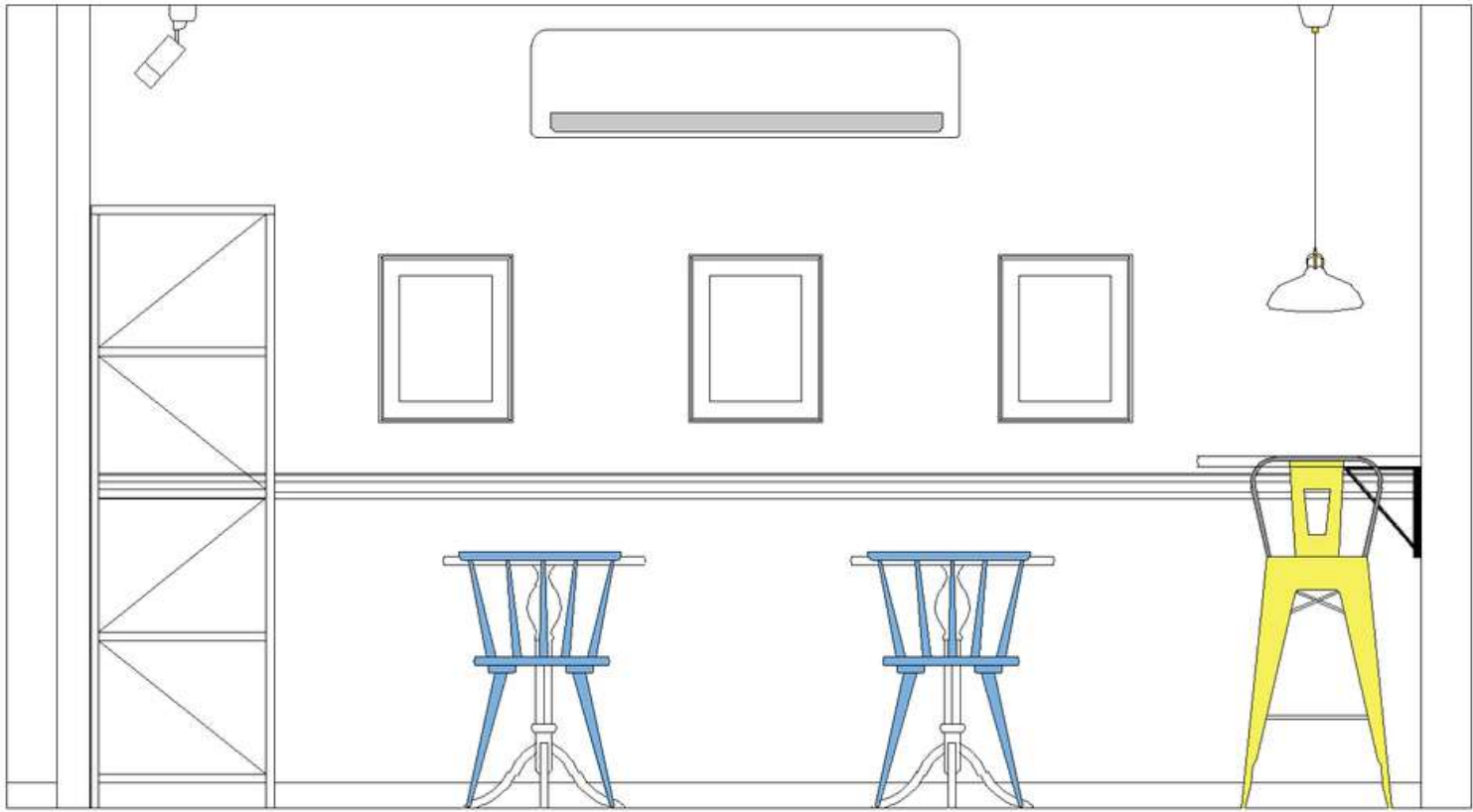
8



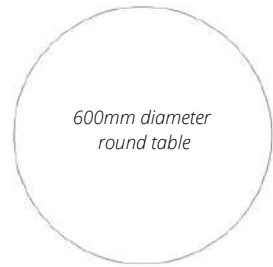
9



8. Bread stand
9. Cake display at entrance
10. Elevation exit area

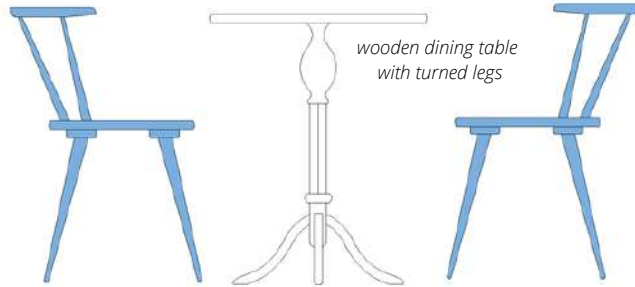


11



600mm diameter
round table

white painted dining table
paired with classic chairs,
designed sleek considering
the space and to suit quick
casual dining.



wooden dining table
with turned legs

11.1



12

11. Elevation seating area

11.1 Dining table and chair detailing

12. Elevation partition area /kitchen entrance





Execution phase took about 40 working days which includes the carpentry, fabrication and finishing. It begun with framing works using sal wood and for partition walls cement fiber boards. Next the main display area and the façade of store was meticulously done referring the working drawings. False ceiling and electrical wiring works went on simultaneously. In kitchen linear drain channel, back splash near counters and exhaust system was installed. A sliding partition separates hot and cold area of the kitchen. Most of the fabrication ,powder coating was done at workshop. Finally paint job and placement of loose furniture finished the complete work.





Mr Sujith Kumar,
Ex-Domino's Manager,
Wanted to start up an eatery.
The Client ,desired to have
Industrial style ,Telegu music
themed food court.
The Site was a Car wash Station ,
and the challenge was to design
the restaurant keeping the
equipment intact.

It was a Post-Pandemic project
and the client wanted to invest as
less as possible.
Materials such as recycled mild
steel and OSB board were used to
cut the cost.
Lighting installation were
designed using horn trumpets ,a
gasoline barrel for the sink
counter and most of the furniture
was produced locally.



అండ్ ఫుడ్ లౌంజ్
THE FOOD LOUNGE



poured Concrete flooring to give raw yet elegant finish with extreme durability. An important aspect of Industrial design.



OSB board, a green material, with pvc varnish coating for water repellent properties. Also a cost effective solution for paneling



Diamond mild steel mesh to pair with existing structure of garage create a divider without hindering the air flow and natural lighting.



portrait of Legendary singer SP. Balu was laser cut in black acrylic to give a bold statement, it stands tall as the center of attraction and is fairly visible from far distance. Paying tribute to his legacy and contribution for music industry. ▶



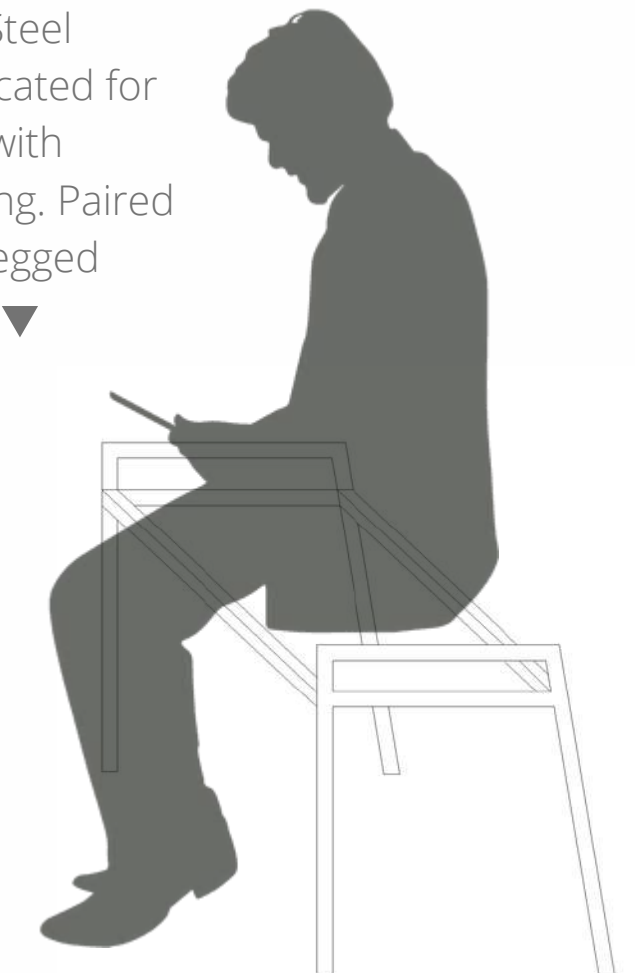


Hanging swings

seating creates an outdoor dining experience and also adds drama, moment to the space ►



A bench with woven jute top which resembles "khatia" a traditional Indian bed used commonly in county side. Steel frame is fabricated for sleek design with powder coating. Paired with hairpin legged dining table ▼



Seating bench

adjustable threaded rod
to align the height of the fixtures from the
pitched roof

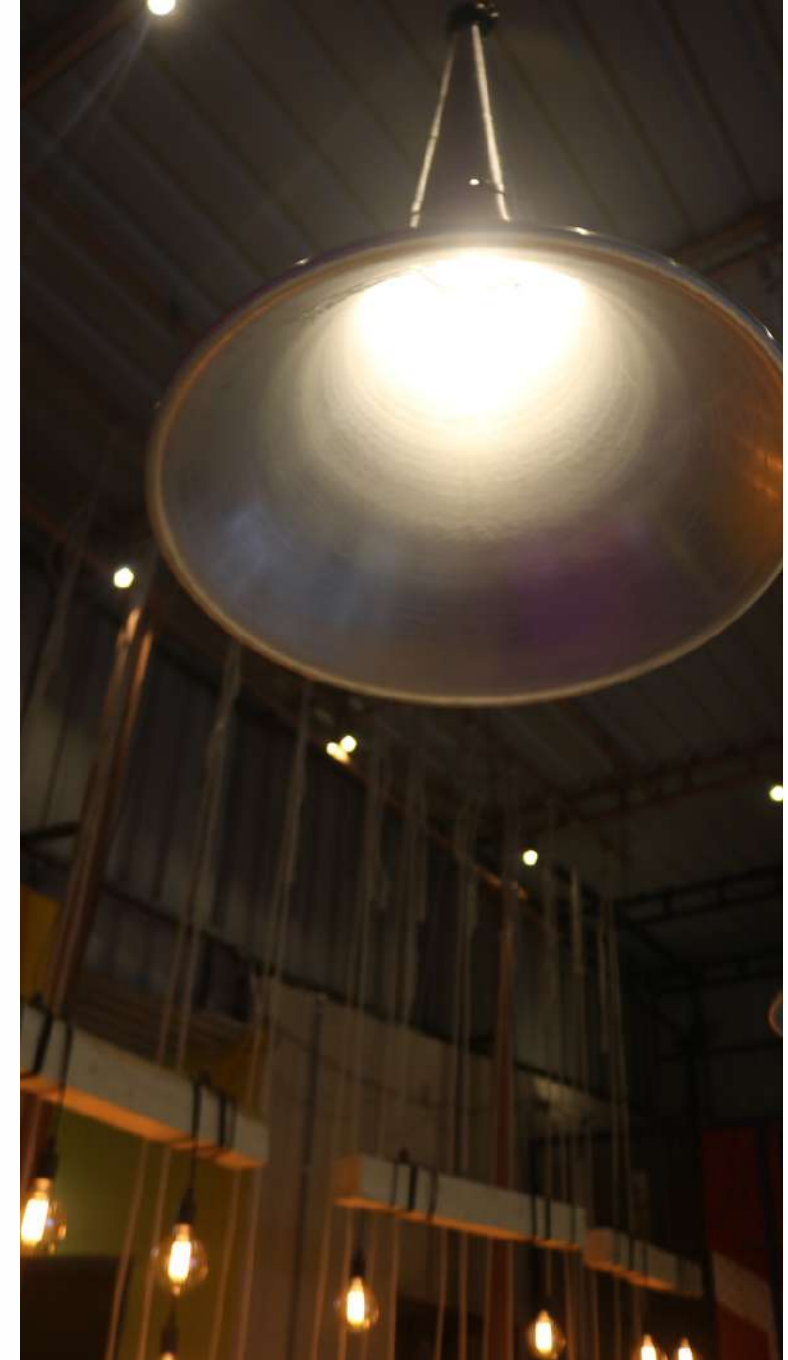


24 watt warm white
led spot light for high beam effect



Trumpet Horn Lighting Fixture

◀ For the industrial styled restaurant with music theme ,the musical element was missing. An idea to use a trumpet horn as a light hanging turned out to be outlandish. It has been economical as well as creative at the same moment

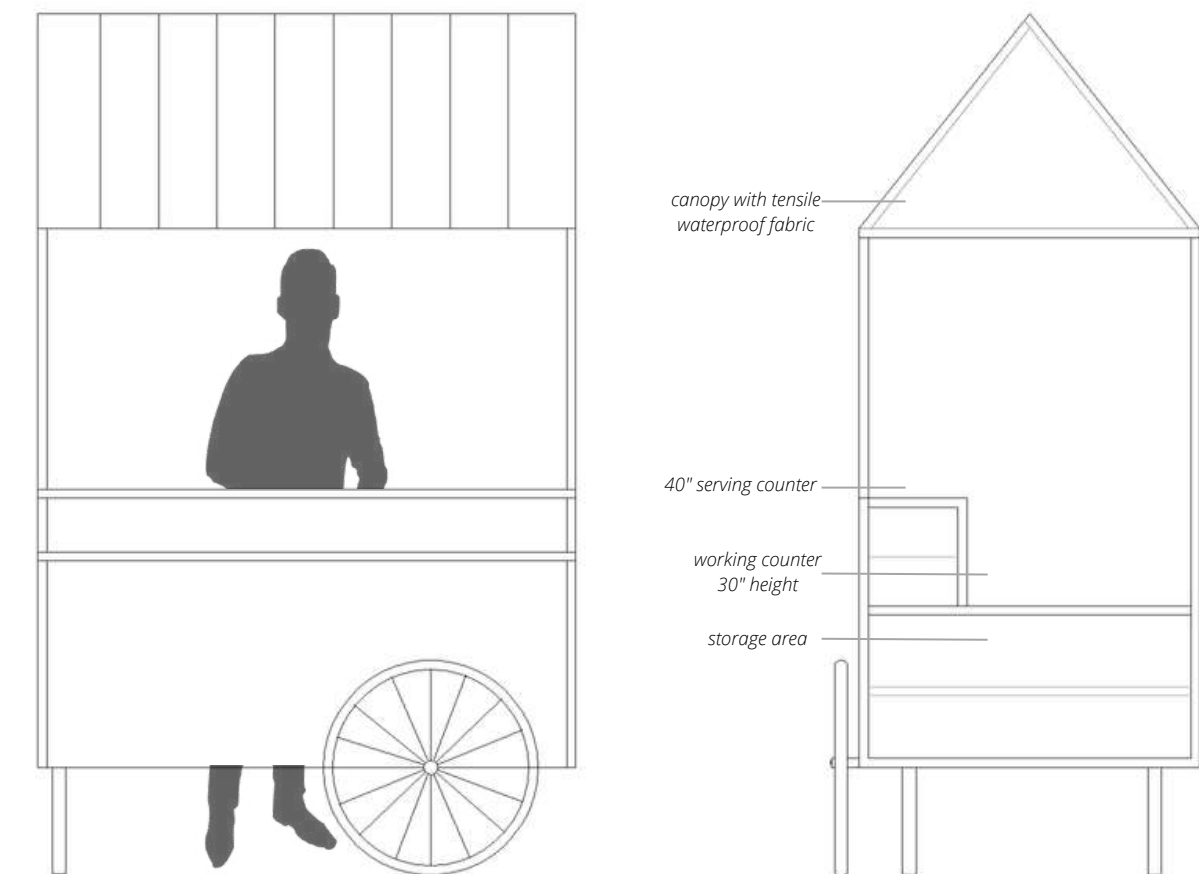




- ▲ It is a quick service restaurant Q.S.R model, thus preparation is simple, a live kitchen opposite to the dining area makes it interactive and customers can themselves monitor the hygiene and the making process. Most of the exhaust equipment were recycled from a scrap dealer.



Snack counter



A cart like serving counter for juice counter and snacks

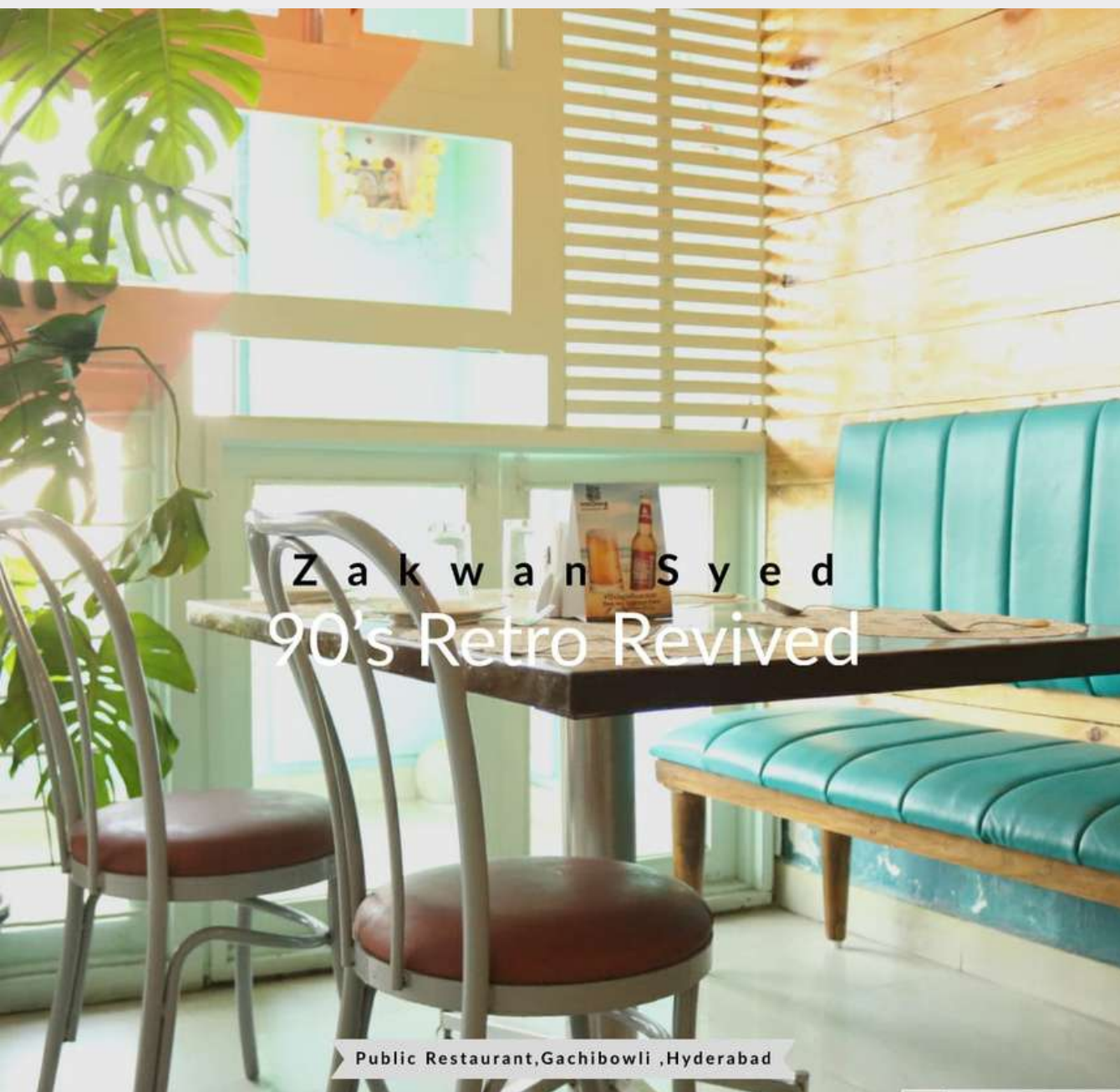


Execution phase took about 30 working days as the client had decided the opening date before hand and made arrangements for it. With a very short deadline, works had to be carried out in both shifts. The fabrication team did the complete work staying at site. Latter civil works like concrete flooring and kitchen walls were built. Most of the working drawings and furniture detailing was drafted by hand to save time.

A retro themed fine dine restaurant.
An 80 seater space spread across 3260 sq ft carpet area.
The dining area along with kitchen had to be planned on third level of a commercial building.
Client desired to have a 19 century styled space with a modern approach.
The area was divided into two , one with natural lighting to give a outdoor dining vibe with lushy green indoor plants.
The area with low lighting for families and couples for an intimate ambiance.
To get the authentic retro look all the furniture, especially the Bent wood chairs 18 were fabricated in mild steel for durability and longevity. Paired with tanned leather sofa booths.

The lighting fixtures are also fabricated and spray painted. Wall moldings , Chair rails, wainscoting on walls, creates a timeless dining experience.





This was one of my first projects, all the drawings were hand drafted. A large scale project which involved fabrication and customization of complete furniture and lighting range. It gave me an initial breakthrough in to design field as I was exposed to variety of processes at the same time. A great learning experience which I would cherish through out my life





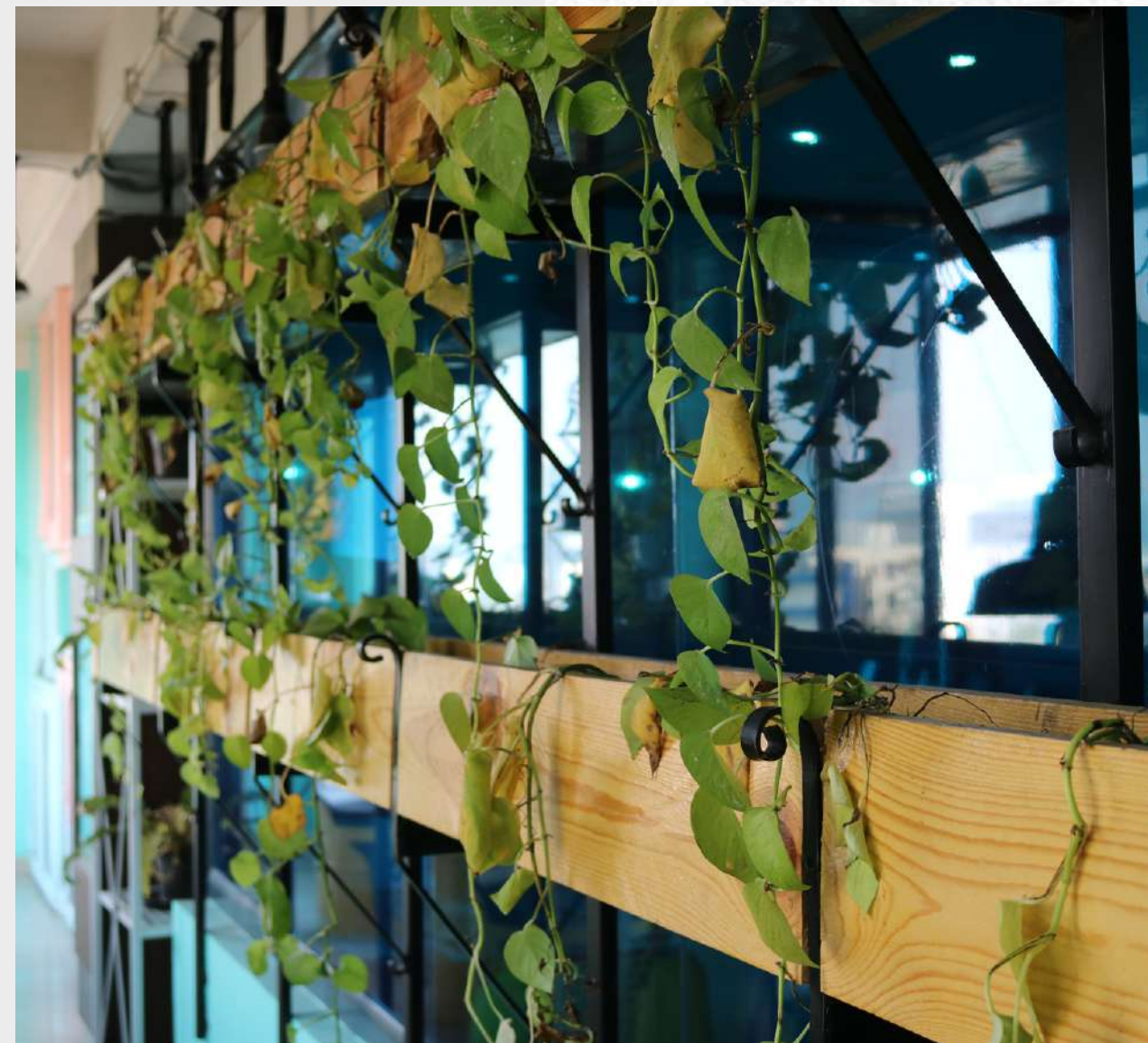
A partition made out of old doors and windows separates the main dining area ▲ from couple seating. It was also meant draw natural light to create a outdoor dining ambiance.

The chairs inspired from thornet chair 18, was fabricated in steel, it was one of the toughest part as most of the fabricators could not bend it and would crack in the process. SR grade mild steel tubes were hand bend to produce the the chair back followed by welding then powder coating.

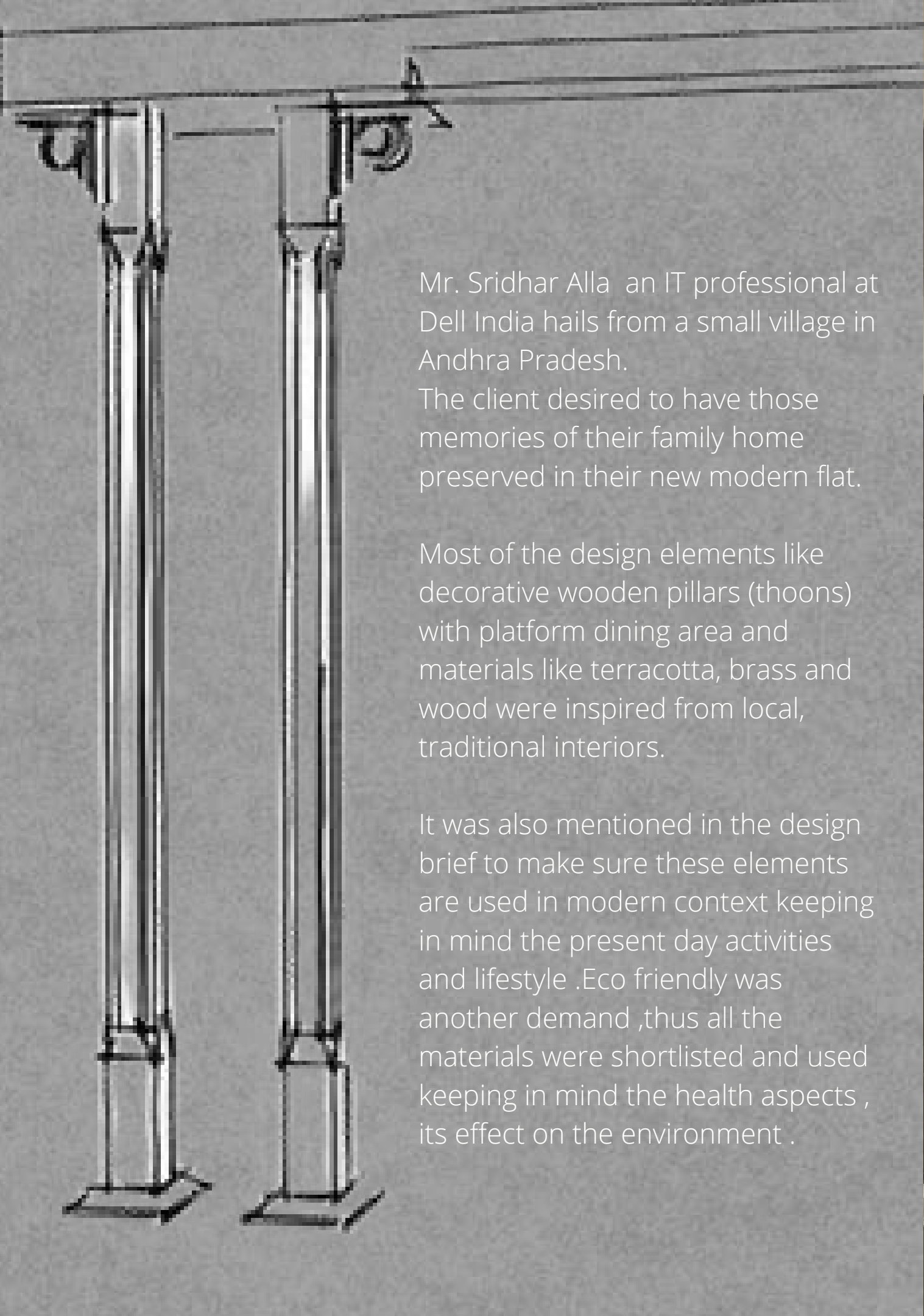
◀ **Circular Sofa booths** with tanned leather tufting occupied the family dining space. To make them look sleek wooden legs were used. Most of the lighting fixtures including the standing lamp behind the sofas had to be customized and fabricated.



The property had a very narrow lane about 4.5' wide and 17' long , It also had a good view of the street .This place was planned for couples seating as it would provide privacy and intimate dining experience. Sofa chairs were made from recycled barrels and gibbon caged dining table was fabricated filled with rivers stones.



A row of planters with vines installed opposite to the seating as it had plenty of natural light. Drip irrigation system with an automatic timer was installed to monitor and water the plants. Making it hassle free to maintain. Other elements like the light dome were bought from an antique store and refitted with led Edison bulbs. Pine wood was extensively used especially in paneling and in the cash counter area.



Mr. Sridhar Alla an IT professional at Dell India hails from a small village in Andhra Pradesh. The client desired to have those memories of their family home preserved in their new modern flat.

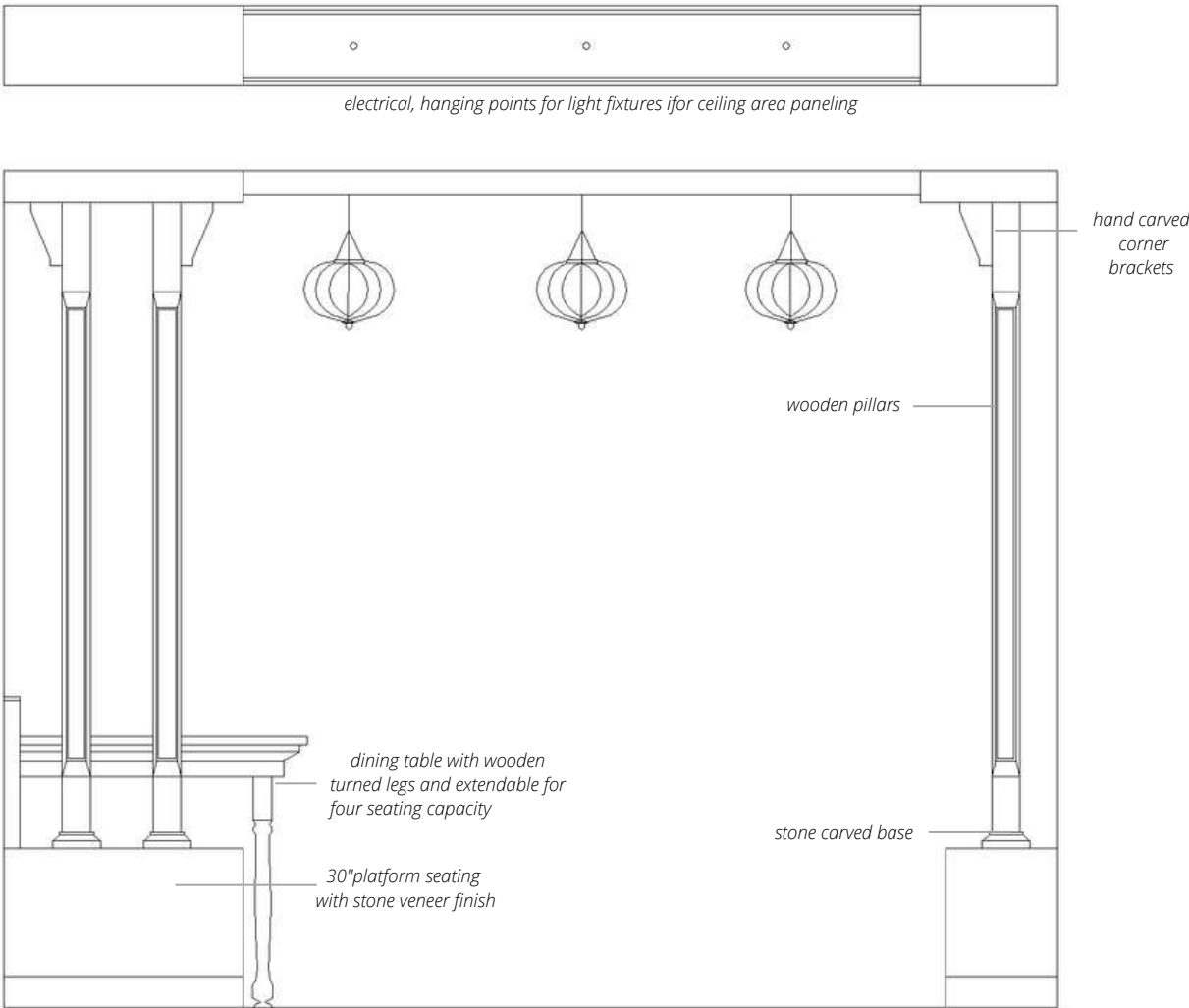
Most of the design elements like decorative wooden pillars (thoos) with platform dining area and materials like terracotta, brass and wood were inspired from local, traditional interiors.

It was also mentioned in the design brief to make sure these elements are used in modern context keeping in mind the present day activities and lifestyle .Eco friendly was another demand ,thus all the materials were shortlisted and used keeping in mind the health aspects , its effect on the environment .

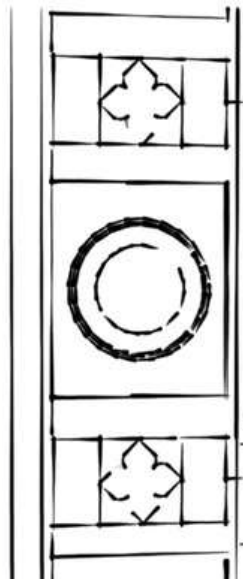




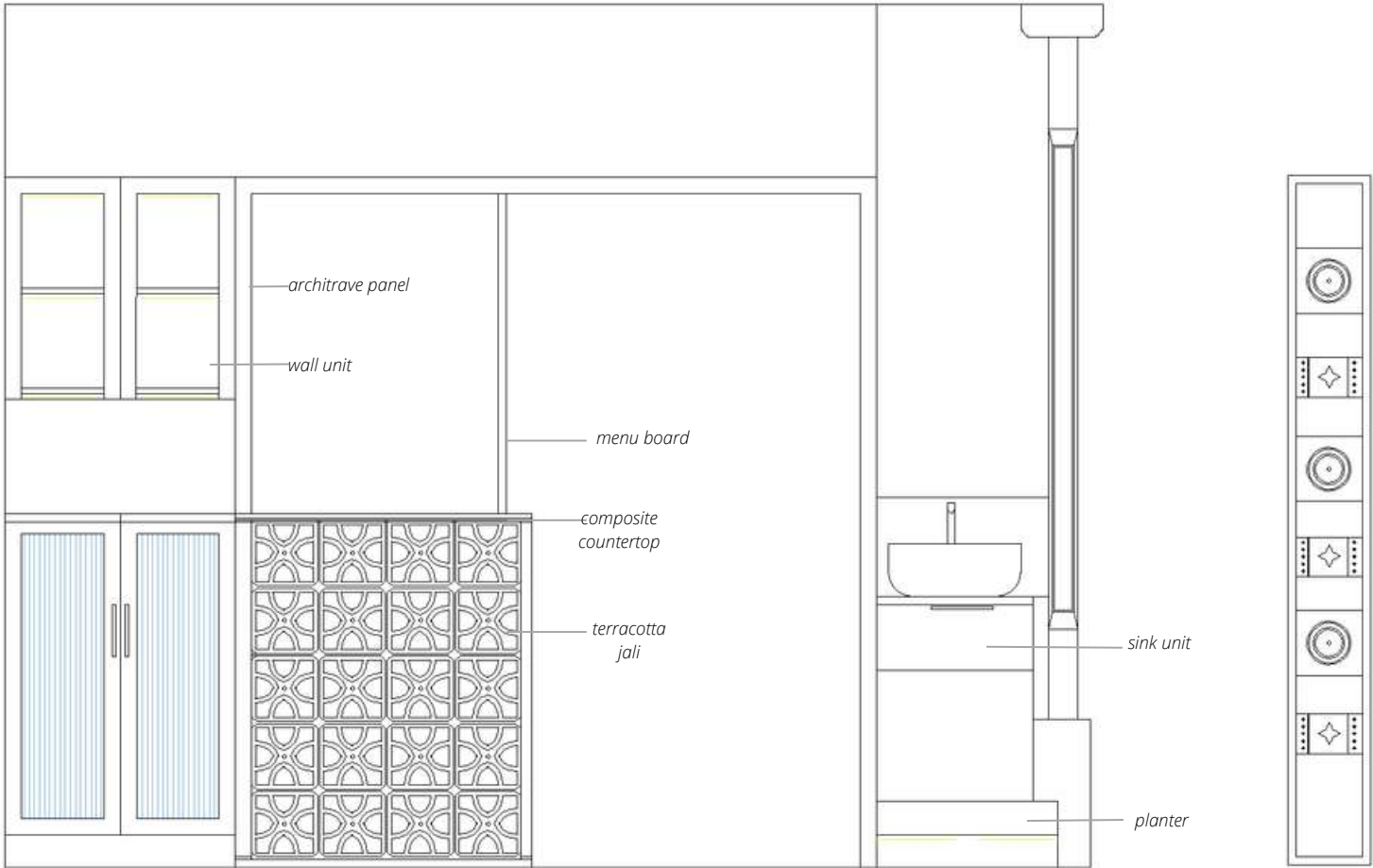
Thoons, traditional wooden pillars are architectural feature, providing structural support to the porch area of a South Indian homes. These pillars were used near dining area creating a zone separating living area and dining It also extends to a platform seating with dining table



1



1.ARCHIVATE PANELING DETAILING 2. FLUTED GLASS SHUTTER



The entrance to kitchen are a has a breakfast counter and crockery unit architrave paneling with round turned pieces and brass petal in embossed on it. Terracotta jali is used for the breakfast ,and fluted glass for the crockery lower shutters.



2

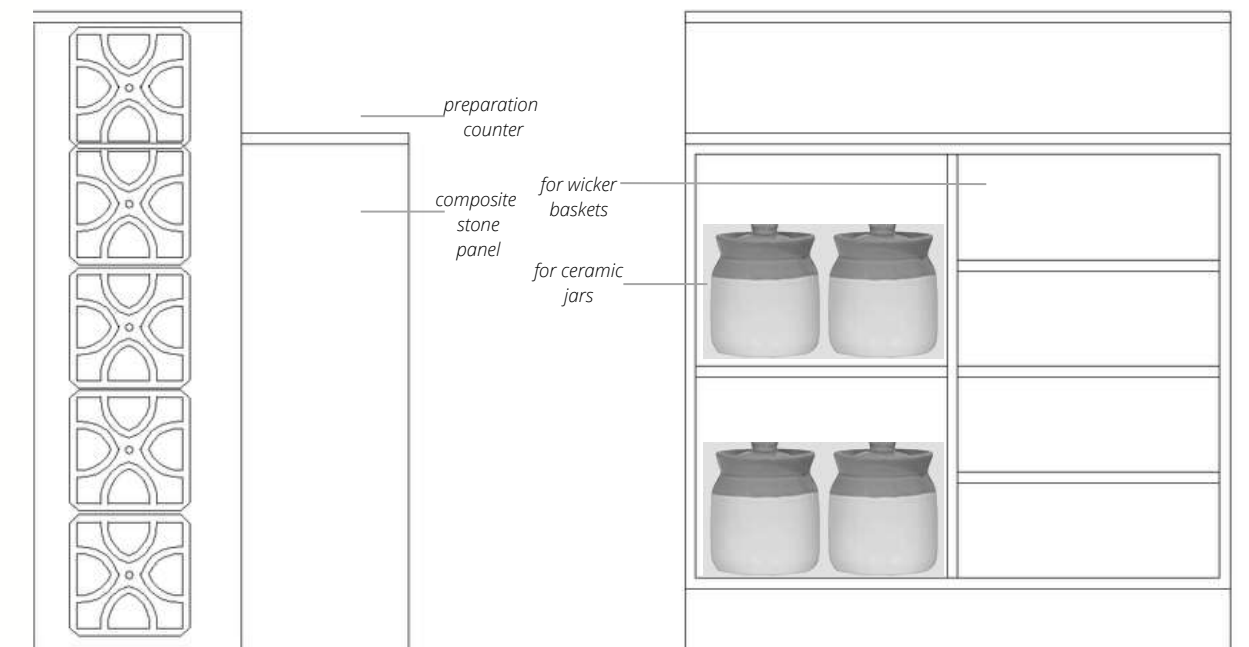


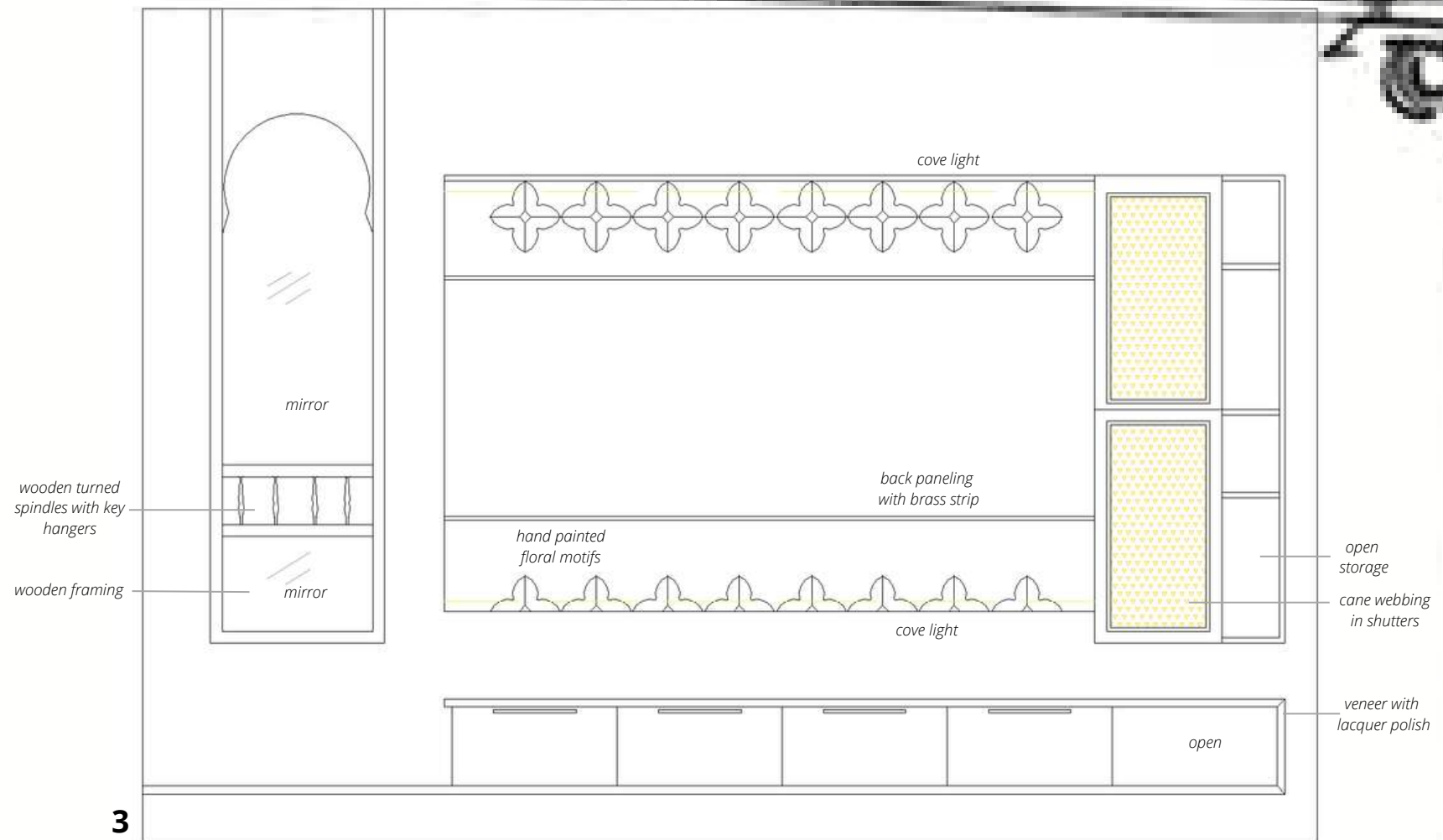


Hexagonal terracotta tile with floral motif, used in collapsible type partition. The client wished to have a foldable partition to cover the passage opening in to the bedrooms and common bath. To make it look traditional these tiles were used in mild steel framing with top line sliding mechanism. It brings privacy separating the rooms from rest of the common area



Terracotta jali 8'x8' size used along with composite stone countertop and sides. The perforations make it look delicate and adds depth to the serving counter. The other side of it has plenty of storage with a standard preparation counter. Designed to store vegetables, fresh fruits in wicker baskets and bigger shelves for ceramic jars





Teak wood veneer on ply wood carcass for most of the furniture finish. It also was used to replace natural wood. Engineered veneer gives a seamless and consistent design through out the space



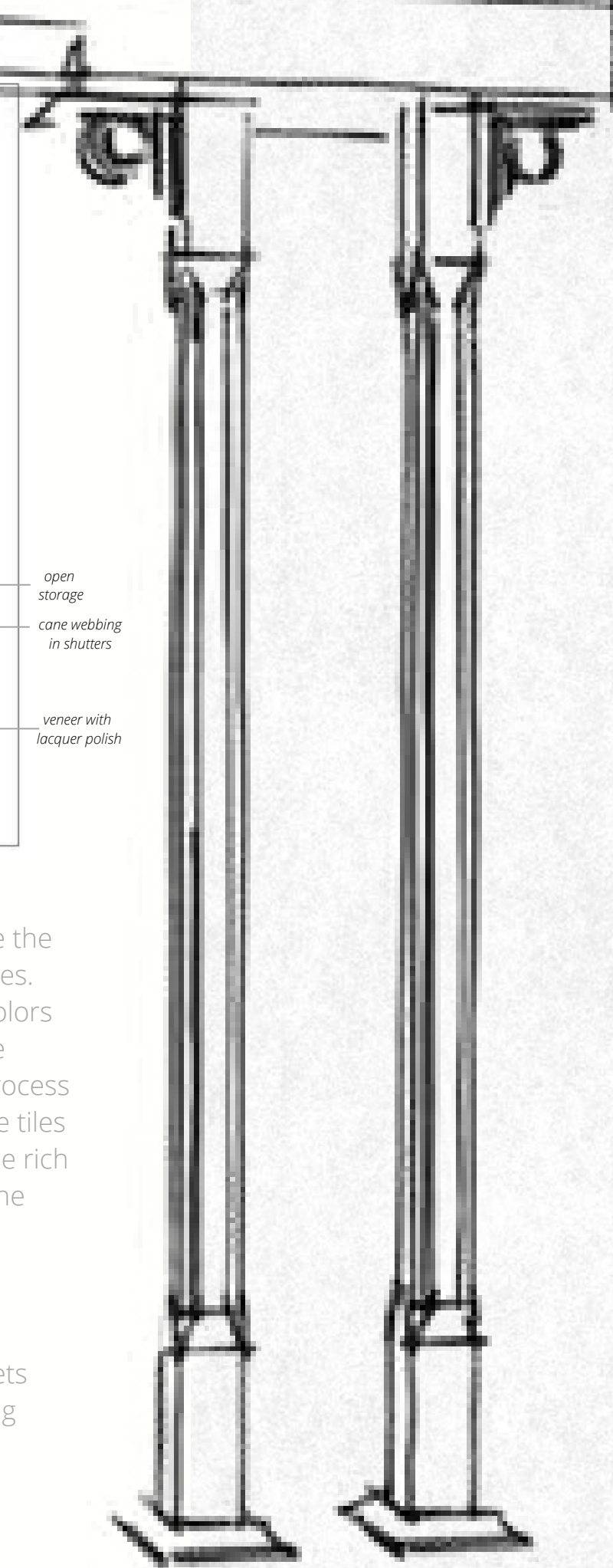
Athnagudi Tiles are the traditional cement tiles. They come myriad colors and patterns and are made by a unique process using local soil. These tiles are a testimony to the rich cultural heritage of the Chettiar community



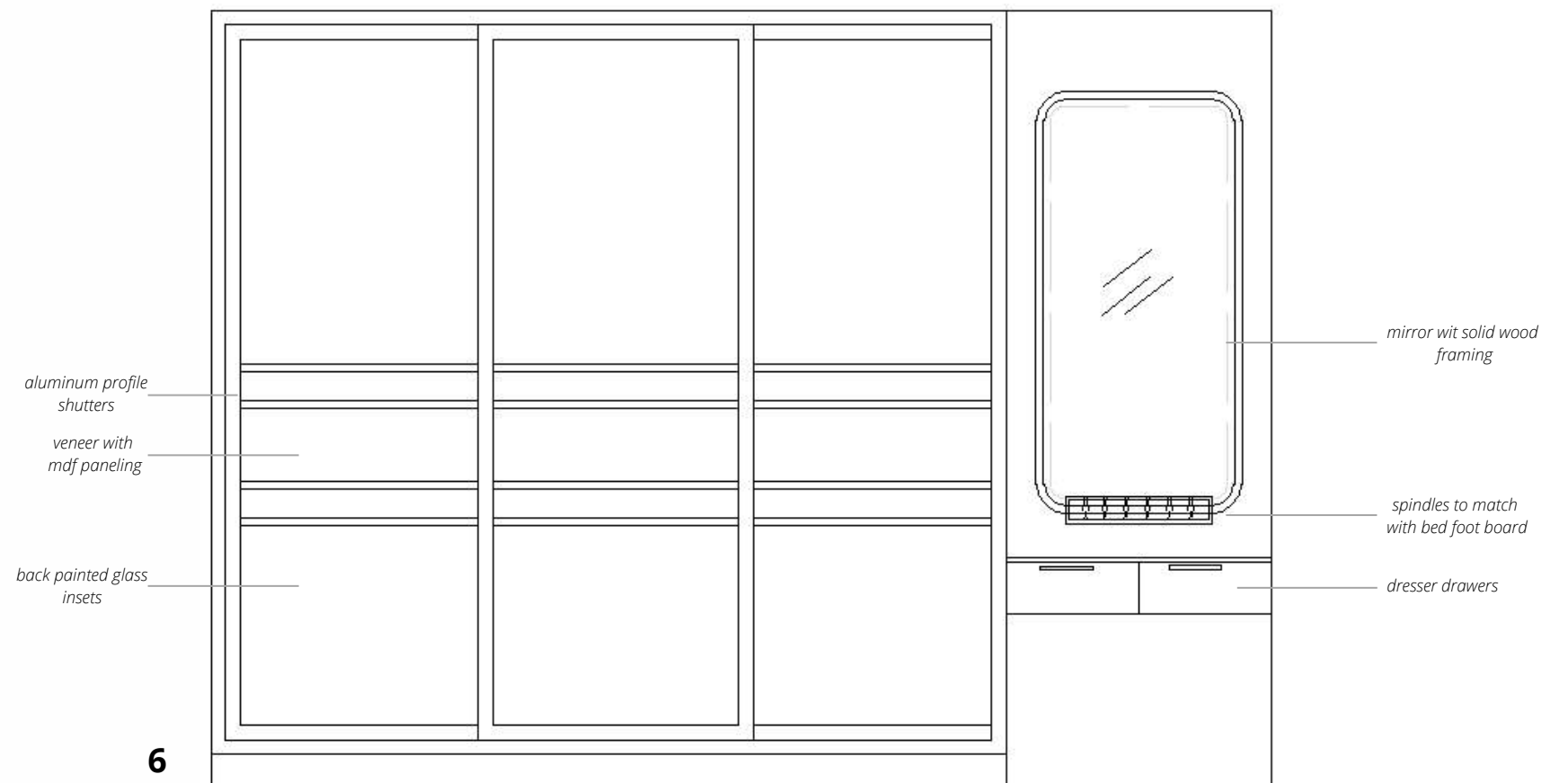
Stone veneer, used on platform seating area, gives outdoor seating experience, and has clean edges unlike the stone cladding



Rattan webbing sheets with solid wood framing used for shutters in entertainment unit as well as guest bedroom wardrobe



3. Entertainment unit 4. Dining area

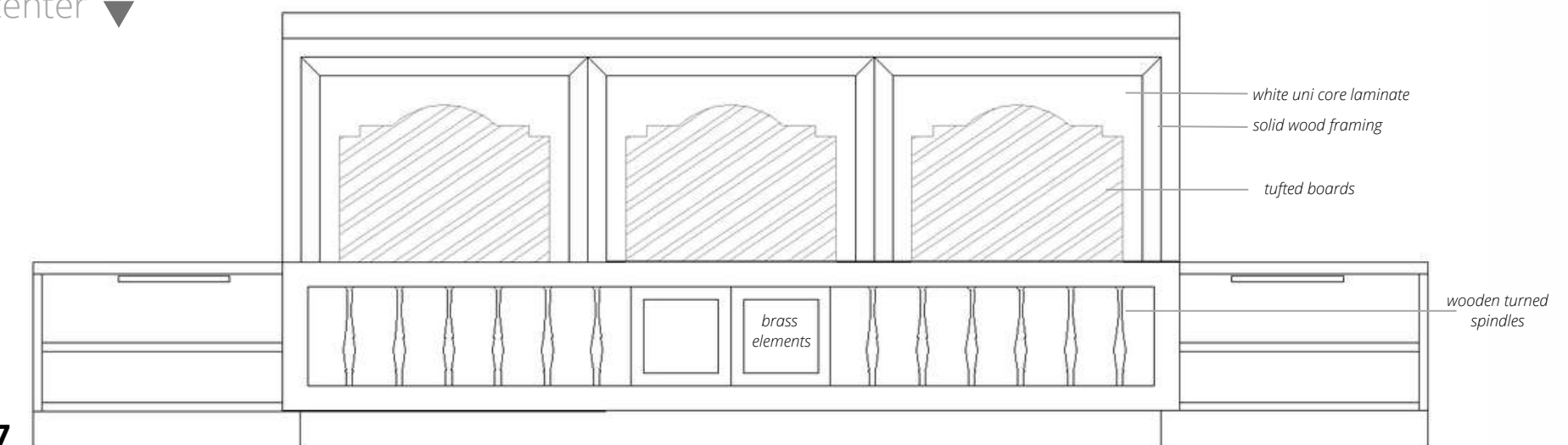


6

The master bedroom has a wardrobe along with a dresser. To make it look traditional with modern materials and sliding system, brass anodized aluminum profile is used. For insets veneer ,mirror and back painted glass is used. The floor to ceiling shutters reflects plethora of natural light and makes the room look bigger.

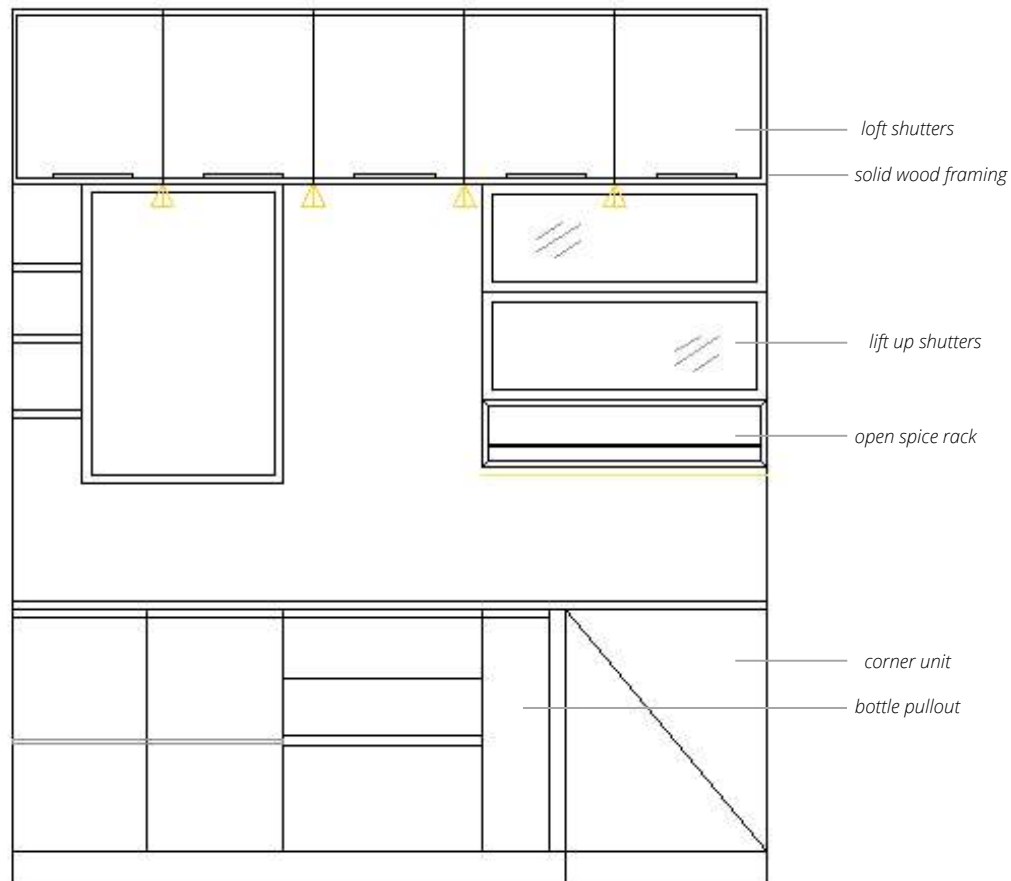


The bed has features like underbed hydraulic storage .While the carcass is made of plywood, the head board and foot board has solid teak wood framing along with white laminate. The head board has three tufted boards for cushioning and foot board has wooden spindles which matches with spindles in pooja unit and entertainment unit. It also has brass elements to the center

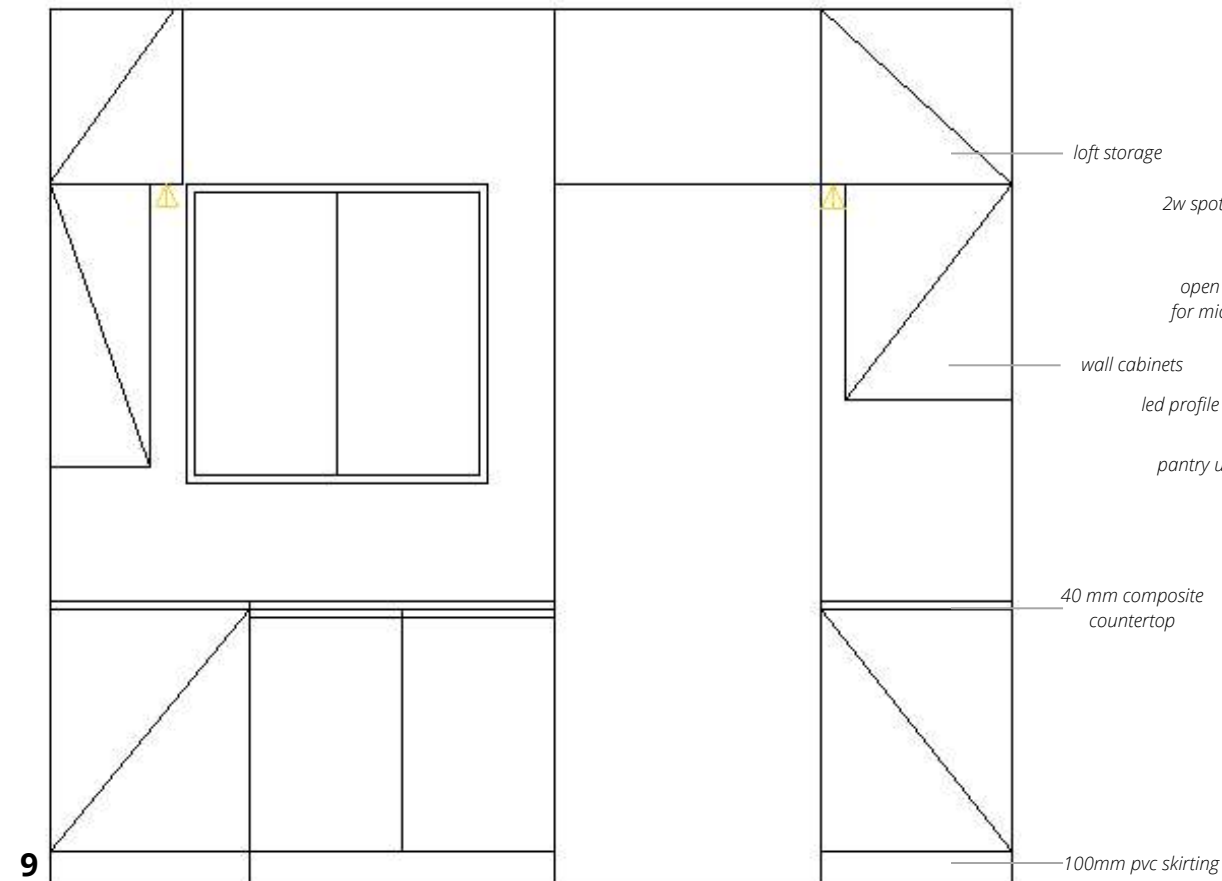


7

6. Mater bedroom wardrobe/dresser 7. Bed with side drawers



8



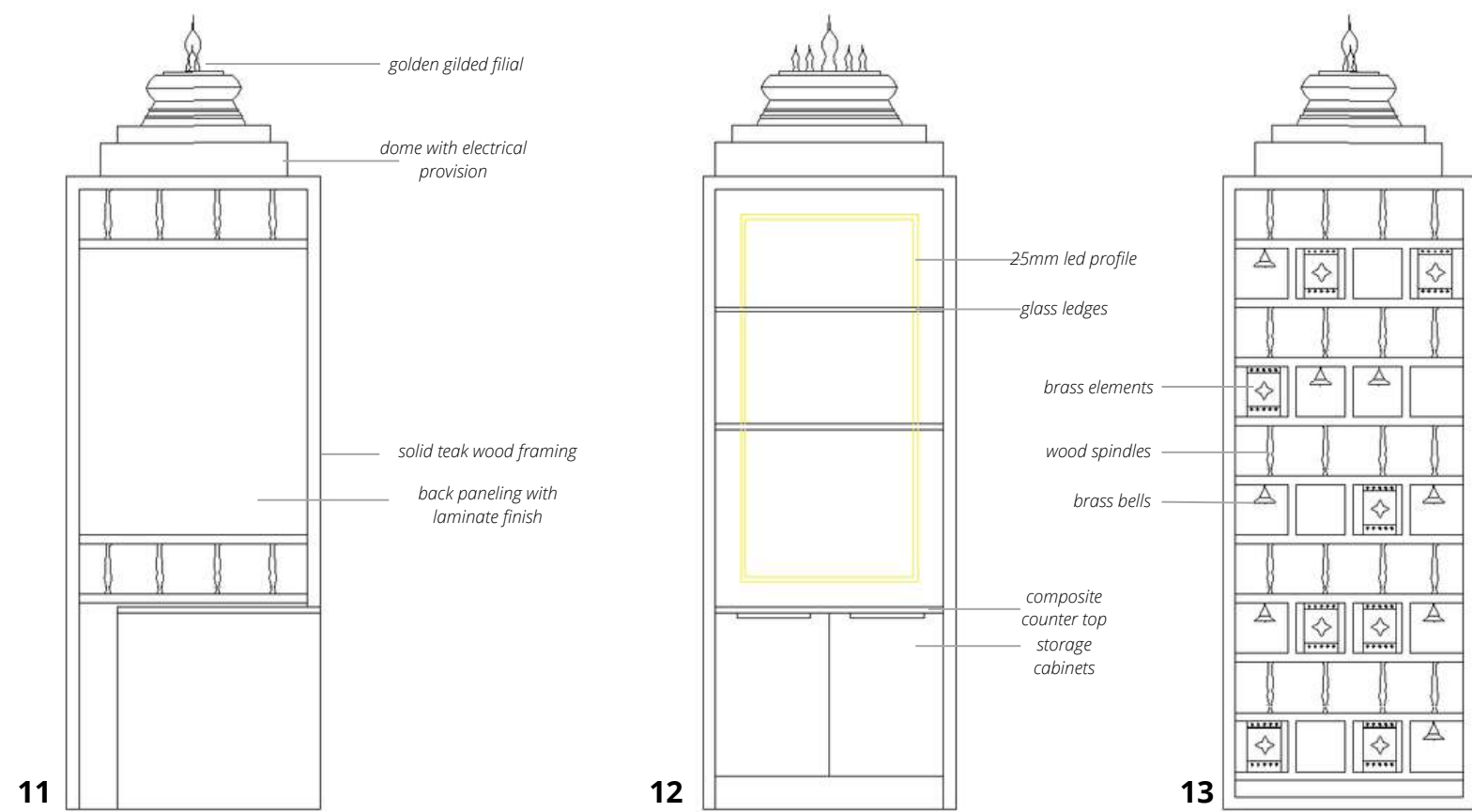
9



10

The kitchen is modular with tandem boxes , bottle pullouts, pantry unit and profile lights. Wooden laminate similar to teak finish is used along with brass handles. For back splash cement tiles with wax coating and composite stone slab on counter tops.

**8. Elevation A 9.Elevation B
10. Elevation C**



11. Wall side elevation 12. Front elevation 13. Side elevation

Guest bedroom has a small area to save space sofa cum bed is placed in the center ▲. The wardrobe in the corner has slidable cane shutters along with open shelves for ease of use. An extended study is multifunctional which also serves as dresser.

◀ Towards left is the north east side, in accordance to vastu the pooja ghar must to be placed in this corner. Solid wood framing with plywood paneling makes up the unit. Traditional and ethnic components like bells, brass element and wooden filial in gold brightens up the space. Composite stone counter top to withstand oil spillages during pooja rituals and a storage cabinet below for pooja supplies.

TINY HOMES



A Concept design called Tiny homes using a 20'X8' size shipping container. The place was to be designed for a weekend stay home, suitable for two adults and two kids. At the entry way there is a place designed for essential and important things making it easy to access. It also has a large window to bring in natural light and make the container look wider.



◀ A drop leaf table which serves as console, unless opened up for dinning

A micro kitchen with electric built in hob and chimney. With provision for a small refrigerator and sink area with backsplash and undercounter storage. Wall shelving units, a small openable window in the center for ventilation and light. ▶



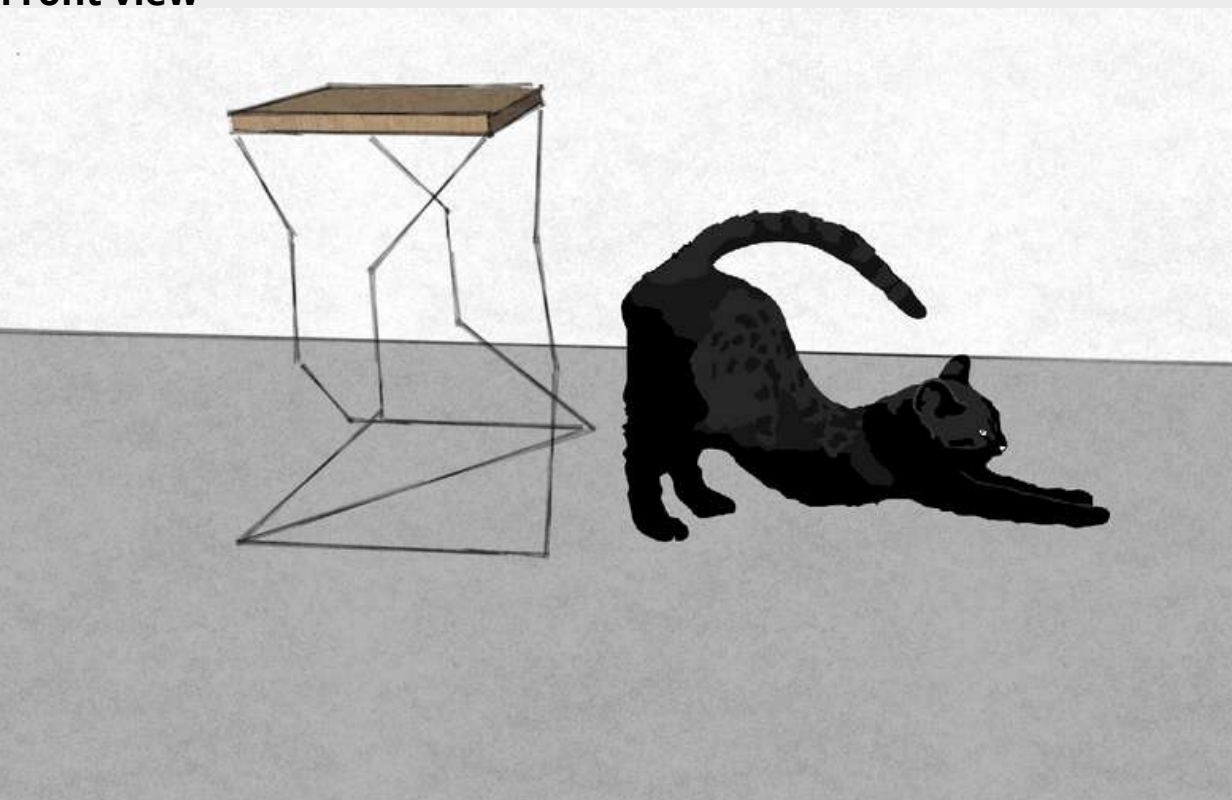
other features like a stacker for folded ▶ chairs, A sofa cum bed .A narrow passage opens into small washroom with a mini closet with foldable shutters and a tall dressing mirror.



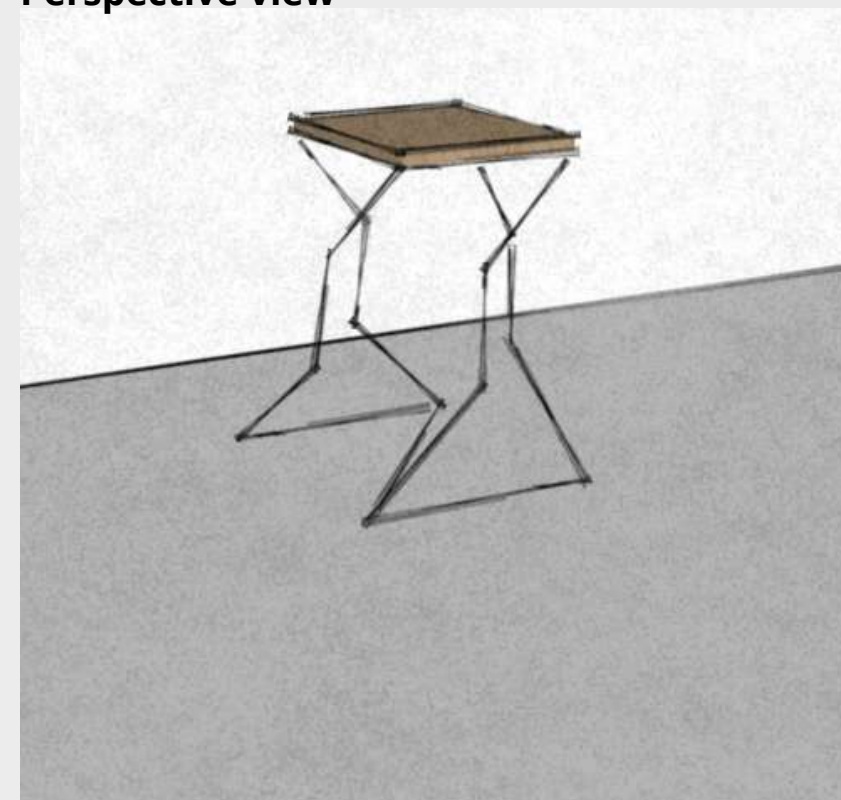
MATRIX STOOL



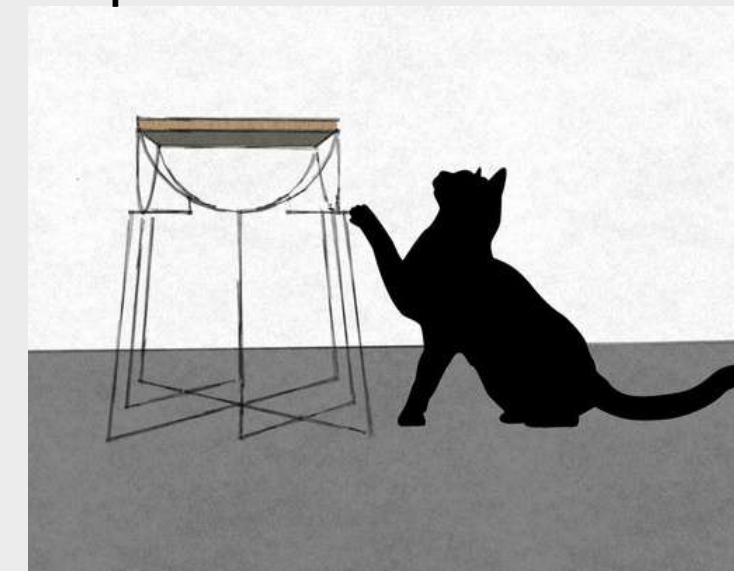
Front view



Perspective view



Perspective view

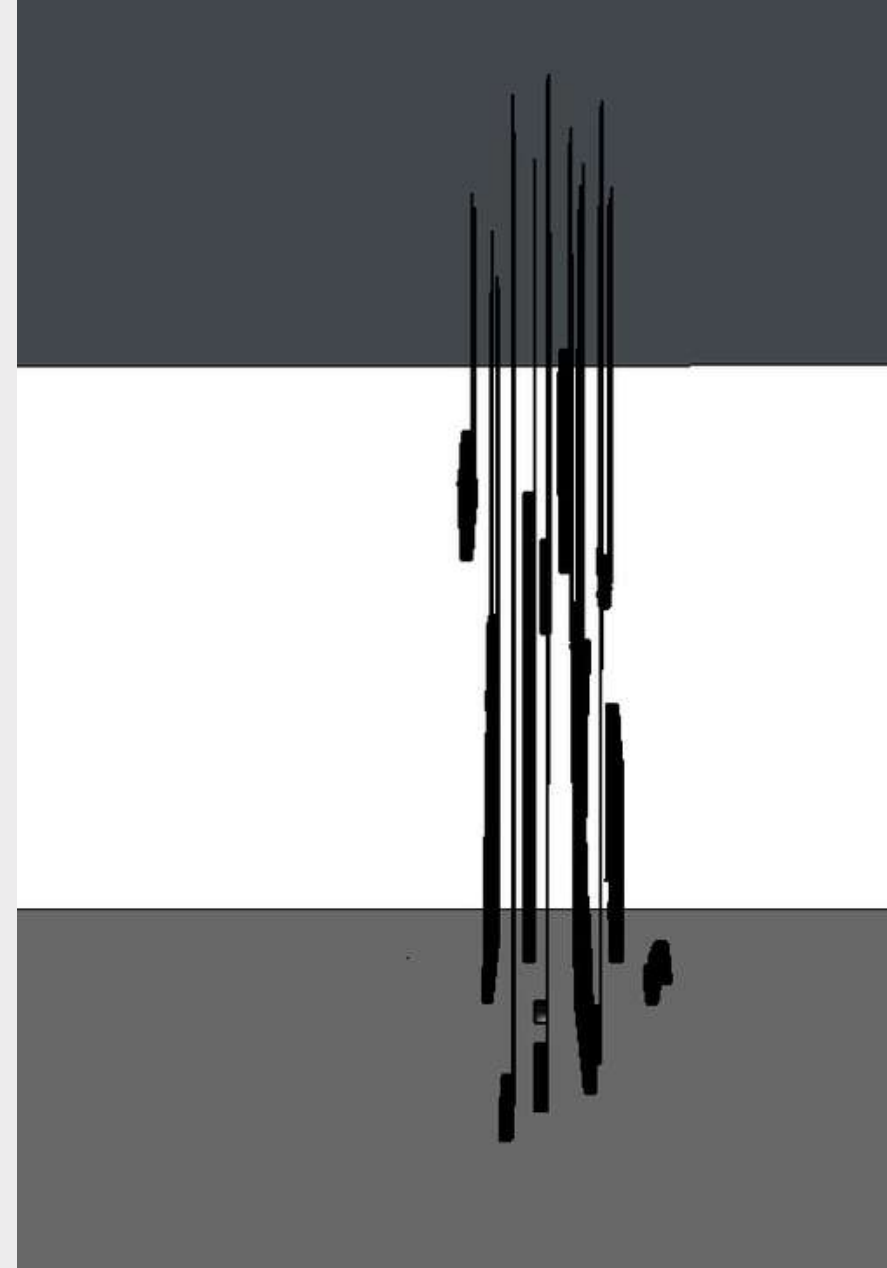


Front view

A series of stools takin inspiration from wire tables. The main concept was, not to have straight legs connecting to the corners of the seat. Instead take variety of bends and curves creating illusion when seen in a perspective



Out of perspective



Out of perspective



In perspective

AN ODE TO APJ ABUL KALAM



A perceptual art installation inspired from works of **Michael Murphy** depicting **Dr APJ Abul Kalam** , the peoples President and a great educationalist

Cnc cut blocks hanged from ceiling, arranged in a manner that it has to be seen from a particular perspective to view the desired Image.